



NĀ 'ĀINA KUMU WAI HAWAI'I'S WATERSHEDS



GUIDING QUESTION

Where does the freshwater I use come from?

WHAT WE'LL LEARN

When you turn on the tap, fresh, clean, pure water flows out. Where does this freshwater come from before it gets to the tap? In this activity, we are going to explore where the water that you drink and use everyday comes from.

We'll do this by following the journey of water from our oceans, to our atmosphere, to our 'āina kumu wai, the lands that gather and store our freshwater, also known as watersheds. We'll learn about our native forests filled with mosses, ferns, and trees that work together to capture and store rainwater here in Hawai'i. We'll even dive beneath our island's surface to visit our natural water storage tank! E huaka 'i kākou! Let's explore!

TIME

1.5 hours

MATERIALS

- "Hawai'i Watershed Diagram" worksheet on page 3 of this guide
- "How I Get My Water" worksheet on page 4 of this guide
- Learning journal or blank pieces of paper

GET STARTED

Answer the following questions in your learning journal or on a piece of paper. These are to get our thoughts going and see what we already know, so there are no right or wrong answers!

- **In what ways did you use freshwater in the past day or two? Try to list as many different ways you used freshwater as you can.**
- **Where do you think the freshwater you use comes from? Record a few of your ideas in your journal.**

If you can, share your answers with a family member or friend, and ask them to answer the questions too.

EXPLORE

WATCH →

[Nā 'Āina Kumu Wai, Hawai'i's Watersheds](#)



As you watch the video, follow along on the "Hawai'i Watershed Diagram" worksheet on page 3 of this guide and fill in the blanks for each step on the journey of our freshwater. You may want to pause the video after each step to give yourself some time to fill in the description on the right sidebar under "Notes."

ACTIVITY

CREATE →

Create and write a story that follows the journey of a water drop to your tap. Where does the story begin? What challenges and triumphs does the water drop encounter on its journey? What other characters does it meet along the way? These characters could be elements like plants, rocks, air, sun, humans, or even other water drops. Name some of the places your water drop travels to on its journey. Include the 5 steps outlined on the “Hawai‘i Watershed Diagram” in your story. Write your story on the lines on the bottom of the “How I Get My Water Worksheet” on page 4 of this guide. If you need more space, continue your story in your learning journal or on a separate piece of paper.

DRAW →

Illustrate your story! Draw a diagram of the journey of a water drop to your tap, including the 5 steps outlined on the “Hawai‘i Watershed Diagram.” Don’t forget to include yourself in the diagram! You are an important part of the story too. Draw your diagram in the box on the top of the “How I Get My Water Worksheet.”

REFLECT

Answer these questions in your learning journal or on a piece of paper →

- **Answer this question again: Where does my freshwater come from? How did your answer change from when we started the activity? What helped you come to a better understanding of where your water comes from?**
- **Why are native forests an important part of our watersheds?**
- **Write down any further questions you have about watersheds and native forests.**

If you can, share your answers with a family member or friend.

EXPLORE MORE

WATCH →

[The Rain Follows the Forest Video PSA](#) (1 min)



[The Rain Follows the Forest Documentary](#) (28 mins)



READ →

[Wai Magazine](#)



[Last Stand, The Vanishing Hawaiian Forest](#)



CHECK OUT →

[Hawai‘i Association of Watershed Partnerships](#)



PLAY →

[Hawaiian Watershed Adventure Board Game](#)



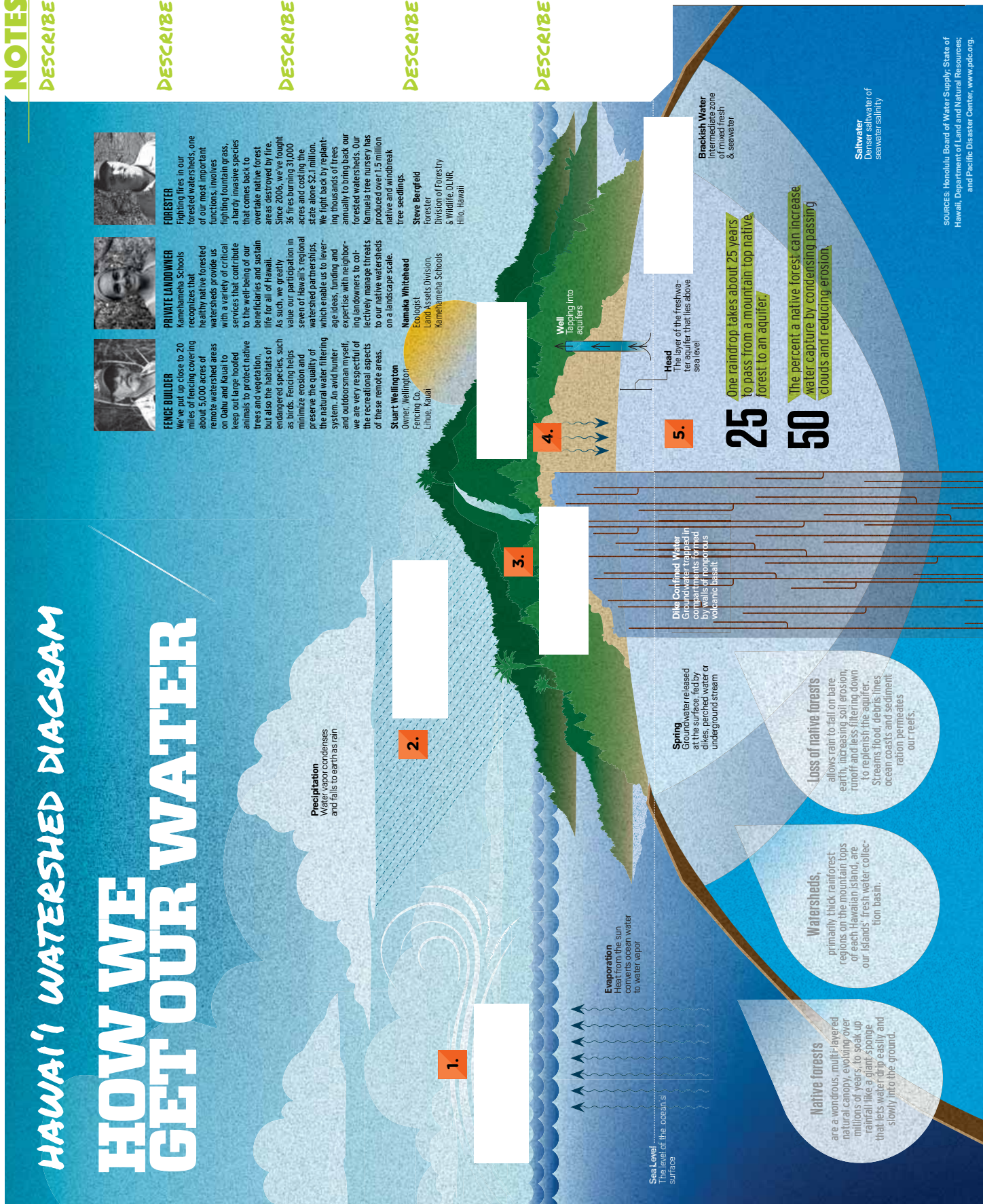
DESCRIBE STEP:

DESCRIBE STEP 2:

DESCRIBE STEP 3:

DESCRIBE STEP 4:

DESCRIBE STEP 5:



HOW I GET MY WATER

THE JOURNEY OF A WATER DROP TO MY TAP



A large rectangular box with a green border, intended for a drawing or illustration.

A series of horizontal lines for writing, consisting of 15 lines.